



CompleteView VIDEO MANAGEMENT SOFTWARE

- Comprehensive and Flexible
- Network Friendly
- Supports IP and Analog Cameras
- Open Architecture
- Easy to Install - Easy to Learn - Easy to Use
- Fully Scalable - One Server to Multi-Site



Secure your investment. Secure your world.

CompleteView Video Management Software contains everything you need to enable and optimize your security system. CompleteView stands apart from traditional Video Management Systems by adding a suite of features to **reduce bandwidth impact on the IP network** and facilitate system administration.

CompleteView comes in three editions: ONE, Pro and Enterprise. CompleteView ONE has the full power of Pro and Enterprise editions but is designed for up to 25 cameras on a single server, at an attractive price. CompleteView Pro is a fully expandable Video Management Software platform providing support for unlimited cameras, users and servers. CompleteView Enterprise provides the full feature set and additional components such as Active Directory support.

CompleteView protects your investment. As your needs change and grow, the **software can scale from ONE to Pro or Pro to Enterprise without losing your original investment**. With support for analog and IP cameras, fixed or PTZ and a number of access control platforms, CompleteView is just that: Complete.



With CompleteView enabling your enterprise you can monitor, maintain, and manage **from anywhere at any point at any time.**

- Users
- Cameras
- Servers
- Configurations
- Software Updates

Comprehensive and Flexible

The CompleteView suite of applications provides everything you need to manage your single-server or multi-server enterprise video system from a single desktop, whether it's local or remote. Powerful Client Applications such as Video Client, Alarm Client, Web Client and Mapping Interface are included.

Video Client provides powerful live video viewing features, access to video recordings, maps and more. Access cameras across any number of servers and allow unlimited clients to be active simultaneously* to support multi-monitor display or populate a video wall. Display cameras simultaneously, tile cameras in any configuration or pre-define views. Sequence switching between multi-camera views and use Quick Review instant replay on any video source.

Alarm Client monitors only relevant security events to make the best use of monitoring resources and reduces operator fatigue. Video displays instantly on an event to catch the attention of the security operator. Live and recorded video can be displayed at the same time with full camera control.

Monitor video without installing software using CompleteView Web Interface client. **Web Client** allows anyone from any location to instantly monitor the security system. Allow first responders to view video in an emergency, display video at configurable frame rates and resolutions, drag and drop cameras to customize view layouts and view up to 16 cameras simultaneously.

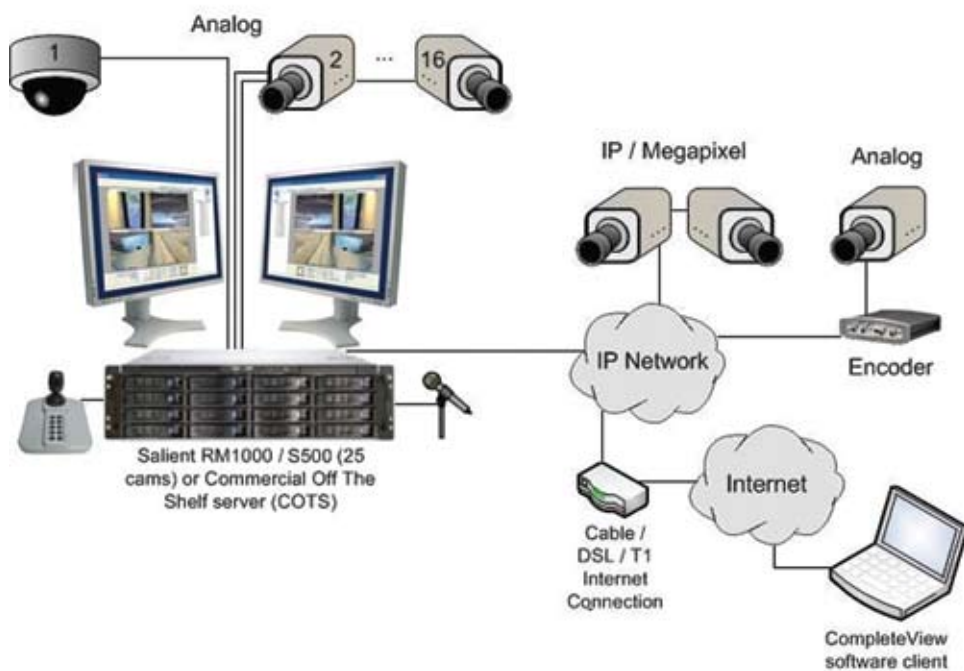
Utilizing CompleteView's **Mapping Client**, security system operators and law enforcement personnel are able to view camera placement on facility maps and see field of view information assigned to each camera. Icons are overlaid on imported map files so operators can gain an instant understanding of the security situation. Configurable cones show camera's field of view, direction and alarm or motion activity. Additionally, system operators are able to view live video on any camera from the mapping interface.

*Available in CompleteView Pro and Enterprise editions.





Network Connected, Standalone Hybrid System



CompleteView ONE System Architecture

CompleteView ONE supports a mix of analog and IP cameras for a true hybrid installation. Up to 16 analog cameras and a mix of standard resolution, Megapixel and High Definition IP cameras can record to the server.

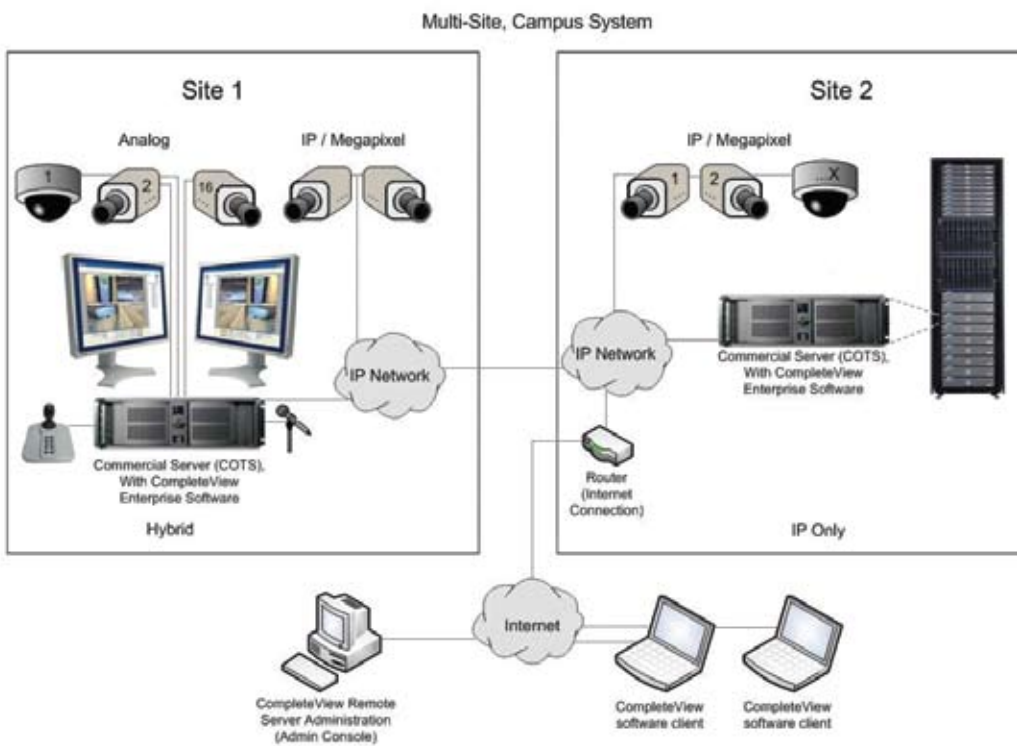
CompleteView ONE supports up to 25 cameras on one server simultaneously. As the need for cameras grows, CompleteView ONE can be software upgraded to Pro or Enterprise.

Cameras can be viewed remotely with connections over a local IP network or the Internet. All client software applications are included and server settings can be managed locally or remotely.

CompleteView Pro & CompleteView Enterprise System Architecture

With CompleteView Pro and Enterprise all sites and cameras can be viewed simultaneously by security system operators. The software scales to any number of servers, clients and cameras system-wide. A mix of standard resolution, megapixel and PTZ cameras are supported.

A unique component of CompleteView Pro and Enterprise is **Admin Console** which offers multi-server management. Admin Console is used to manage all servers simultaneously. In the event of a problem with storage, cameras, or servers, the administrator can instantly see and proactively respond to troubleshoot issues. Administration and live viewing can be done from any workstation on the local network, or, if enabled can be accessed over the Internet.



CompleteView easily scales from a few cameras on one server to thousands of cameras on multiple servers.



A true hybrid system, CompleteView supports virtually all leading IP and analog cameras and encoder manufacturers.

More Facts & Features

Stable Recording Architecture ■■■ CompleteView is built from the ground up using a unique recording architecture. Many traditional Video Management Systems store all video, audio and associated meta data to a database file. In a Video management System, a power outage, hardware failure or other unexpected interruption of the applications can cause the database to become corrupted. If the repair fails, all video contained in the database is lost. CompleteView separates the video and stores it in a flat file structure, outside of its database, avoiding the potential of database corruption and long database rebuilds.

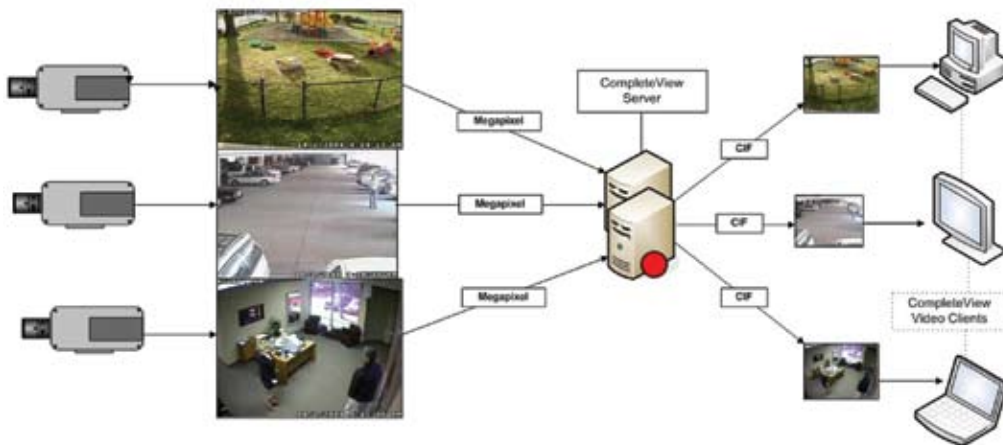
Alarm Console ■■■ Designed to display live video for active alarm conditions. Display up to 4 live video sources simultaneously, list up to 100 most recent alarms and do on-screen analysis of live video and archived event video concurrently.



Automated Attendant ■■■ The most advanced automatic control feature in CompleteView. When motion occurs on a fixed camera, that camera can automatically instruct a PTZ camera to move to a preset location. When motion occurs on multiple fixed cameras those cameras can control multiple PTZ cameras. The system has the ability to give 'high priority' status to important locations so a PTZ camera can hold the view even if motion is detected in lower priority locations. The flexibility of Automated Attendant gives you security coverage in multiple locations with multiple views.



Network Friendly ■■■ CompleteView was designed to 'play nice in the IT world'. It doesn't interfere with existing applications, out of band management tools, anti-virus software or firewalls. Special features have been added to minimize the footprint of digital video on your network and reduce the bandwidth consumed by remote users.



CompleteView includes **Dynamic Resolution Scaling**, a powerful feature to manage bandwidth and network resources. Video is always recorded at the preconfigured resolution on the CompleteView Server. If video is displayed in the CompleteView Video Client at a small size, the CompleteView Server will send a lower resolution copy of the video stream to reduce bandwidth consumption. When video is displayed at a larger size on the CompleteView Video Client, video is automatically streamed at the higher resolution for high quality display.

Active Directory Integration

CompleteView Enterprise supports Active Directory users and groups which can be imported into CompleteView and configured with security system specific permissions. AD Integration avoids duplicate entry of user information and supports a single set of credentials for both network and security system access.

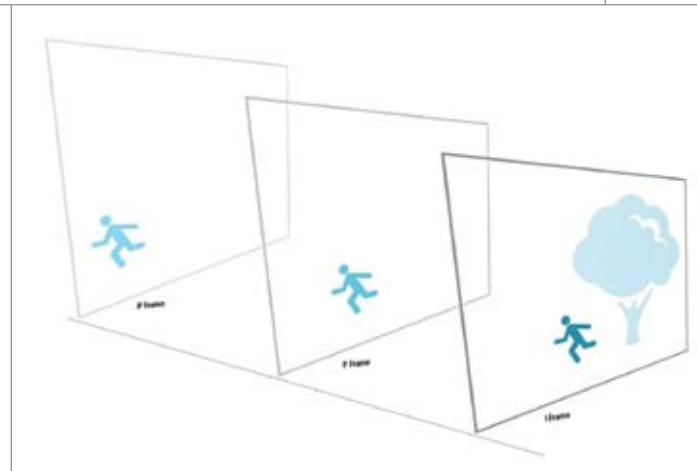
SmartSearch ■■■ Instantaneous retrieval of archived video from any camera or server by time, date or motion events. Missing personal items, equipment or corporate assets? Choose a date and time, highlight any location in the cameras' view and let CompleteView do the rest. All motion in the highlighted area will be identified for viewing. Slow the video down, speed it up, see it frame by frame or create an AVI file for viewing on any PC.

Multi Compression Support: Motion JPEG, MPEG4 & H.264

CompleteView's recording engine supports Motion JPEG, MPEG4 and H.264 compression. Supported formats allow for live view, recording and playback in all major non-proprietary compression formats.

- Recording, Live View & Playback of Motion JPEG, MPEG4 & H.264*
- Optionally transcode between compression formats for reduced storage cost
- Supports native compression from IP Cameras without transcoding
- Different compression formats can be used for recording and live view

*available on all analog and select IP Cameras



CompleteView Config Server

Config Server is an optionally installable component of CompleteView Pro and Enterprise which allows for centralized storage of client configuration. Config Server allows users to log into any workstation or monitoring center and maintain their configured views, camera access and other settings. For security operations with multiple monitoring centers this can be an especially useful tool for scheduling guards at different stations. Security does not have to be sacrificed in situations where a user without access to certain cameras needs to log into the security system from a workstation configured to access normally unauthorized cameras and views.

Config Server also allows the administrators to centrally distribute new client software releases. When new versions of CompleteView client applications become available, the administrator can push the new release to the Config Server. The next time a client logs in, the user is prompted to upgrade with no further administrator intervention.

Lower Total Cost of Ownership

Dramatically lower your total cost of ownership. CompleteView enables you to implement a comprehensive video management strategy and cut the costs of managing your enterprise.

Open Architecture, IP or Analog cameras & Access Control supported ■■■

CompleteView takes the complexity out of designing and implementing your surveillance system by supporting differing camera technologies in a seamless manner. Enhance your security by integrating video and access control with a number of supported access control products.

A true hybrid system with seamless integration of analog and IP technologies, CompleteView supports virtually all leading IP, analog and encoder manufacturers, allowing you to choose from a wide variety.

Flexible Purchase and Delivery ■■■

CompleteView can be delivered in three ways:

- Pre-installed on Salient Systems' purpose-built workstations and servers.
- Pre-installed on tier one industry standard platforms such as Dell, HP or other leading hardware vendors.
- Available as software only.

Easy Installation ■■■

Lower your manpower costs with CompleteView integrated systems pre-loaded with application software and documentation. An intuitive user interface guides users through set-up, log on and camera viewing. Full documentation is shipped with each system or copy of software.

Pain Free Licensing ■■■

Camera licenses can be transferred from one system to another and replaced with identical units, different models, or with a camera from a completely different manufacturer – all without extra license costs or penalties.



Worldwide Enterprise Capability

