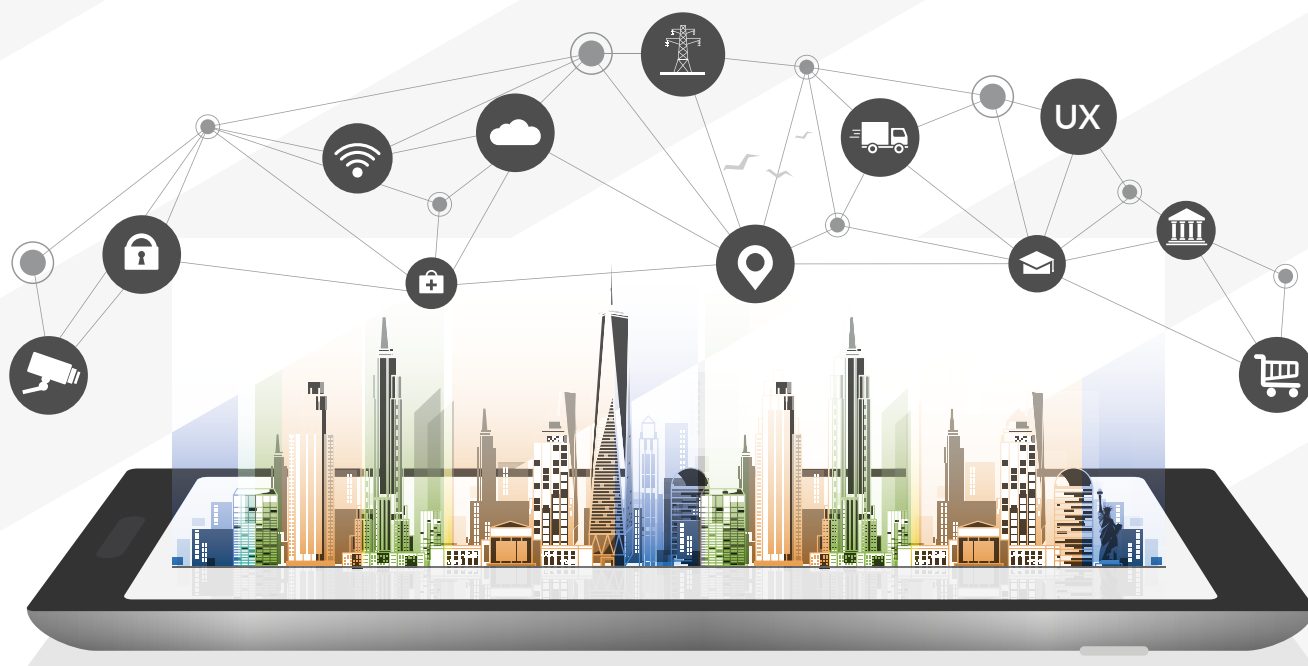


The Next Generation of Intelligent Security.



SALIENT SECURITY PLATFORM

The latest innovation for intelligent security, Salient Security Platform is a unified platform that is simple, scalable, and secure. With a newly designed user interface, superior command and control tools, seamless third-party integrations, and advanced analytics, Salient's comprehensive management solution will meet your security needs – today and tomorrow.



SALIENT™

www.salientsys.com/products/cv20-20

SALIENT SECURITY PLATFORM

WHAT'S INSIDE

CompleteView 20/20	Next-generation video management software
TouchView Mobile	Free mobile app for remote access to live video, video playback with audio, and PTZ camera control
LPRTracker	Powerful license plate recognition recording and alerting capability
TransactionTracker	Synchronize POS transactions, video data, and exception-based reporting systems
ViewPoint	Turn any desktop computer screen into a video feed for monitoring computer activity
Video Synopsis	Video analytics that transform video into actionable intelligence

THE 5 MOST SALIENT POINTS



SALIENT SECURITY PLATFORM

With CompleteView 20/20, the power of advanced video surveillance is available in three editions.

CV 20/20 Editions	ONE	Pro	Enterprise
Number of Cameras	32	Unlimited	Unlimited
Number of Clients	Unlimited	Unlimited	Unlimited
Number of Recording Servers	32	Unlimited	Unlimited
Analog Hybrid Support	✓	✓	✓
Audio and I/O Support	✓	✓	✓
Web Client	✓	✓	✓
Mobile App with DRS*	Free	Free	Free
Advanced Reporting	✓	✓	✓
3rd Party Integrations	✓	✓	✓

*DRS - dynamic resolution scaling bandwidth management technology

VIDEO AND RECORDING FEATURES

Compression Technology - H.264/MJPEG/MPEG-4	✓	✓	✓
360 pano dewarping	✓	✓	✓
Advanced Scheduling	✓	✓	✓
Alarms	✓	✓	✓
Dynamic Resolution Scaling - efficient network management	✓	✓	✓
Motion Detection	✓	✓	✓
Incident Recording	✓	✓	✓
Synchronous Playback	✓	✓	✓
Cloud Support			✓

FAILOVER AND REDUNDANCY

Edge Storage (Camera Manufacturer Dependent)	✓	✓	✓
VMWare Support	✓	✓	✓
Archiver Failover**			✓

USER SECURITY

User Authentication Management	✓	✓	✓
Privacy Masking (Camera Manufacturer Dependent)	✓	✓	✓
Active Directory Integration			✓
Watermarking	✓	✓	✓
Password Aging**	✓	✓	✓

**Future Version

Prerequisites

- For Management Server (supported on Win 7/Win 10, 2012 R2, and Server 2016): .NET 4.6.1, SQL Express 2017, Minimum supported resolution: 1366x768
- For Desktop Client (supported on Win 7 and up): .NET 4.6.1, Minimum supported resolution: 1366x768
- For Recording Server (supported on Win 7/Win 10, 2012 R2, and Server 2016): no prerequisites



COMPLETEVIEW 20/20 HIGHLIGHTS



GeoView

Select cameras on a map and create a view layout on the fly from selected cameras. Instantly create layouts of cameras, allowing live monitoring to follow suspects easily.



Custom Tabs

Create tabs from individual cameras and view layouts. Enable operators to switch between the most important cameras and views much more quickly.



Automatic Map Switching

Enable operators to see a camera's location in relation to the facility being monitored. Display Alarm View camera images in the Map Panel.



Text Search

Search for events, cameras, and other activities by typing key words into a search box. Instantly narrow down events, cameras, and views to the keywords.



Remote Investigations

Download and search remote video investigations much more quickly through the bandwidth-reducing benefit of Dynamic Resolution Scaling, now available in Playback. Accelerate Playback and search, while exported video is simultaneously downloaded at full resolution.

4616 W. Howard Lane
Building 1, Suite 100
Austin, TX 78728

<https://www.salientsys.com>

Training: <https://support.salientsys.com>

Support: 1-844-SALIENT (1-844-725-4368) or visit <https://support.salientsys.com>