
VIDEO PLAYER USER MANUAL

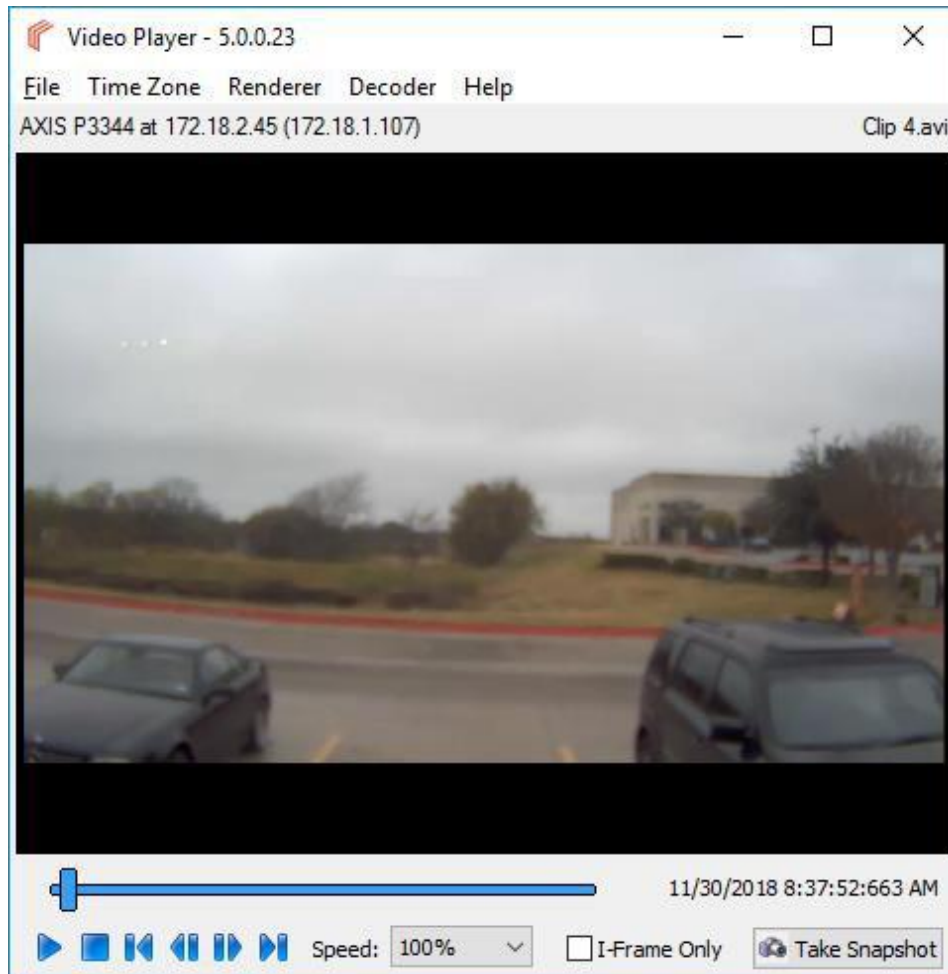
COMPLETEVIEW 20/20

Table of Contents

Table of Contents	2
Introduction	3
System Requirements	4
Operating the Video Player	6
Operating the Video Player: Windows Desktop	6
Operating the Video Player: Session Playback	8
Operating the Video Player: Command Line	11
Interface and Controls	12
Snapshot	15
Timeline	16
Right Click Menu	17
Additional Resources.....	18

Introduction

The CompleteView 20/20 Video Player allows for playback of exported video and audio without the full CompleteView 20/20 application suite installed. CompleteView 20/20's Video Client will ask whether to export video with the Video Player, which can be used to playback and verify that no tampering has occurred with exported video clips. The Video Player allows for the playback of up to 16 video clips simultaneously.



System Requirements

Minimum Software Requirements

- Microsoft Windows 7 or later
- Microsoft Windows 10
- Microsoft DirectX 9.0 or later
- Direct3D acceleration (required for enhanced video rendering and client performance improvement. If not enabled, client will use GDI. Please contact Salient tech support for more information regarding how to check if this feature is available.)

Minimum Hardware Requirements

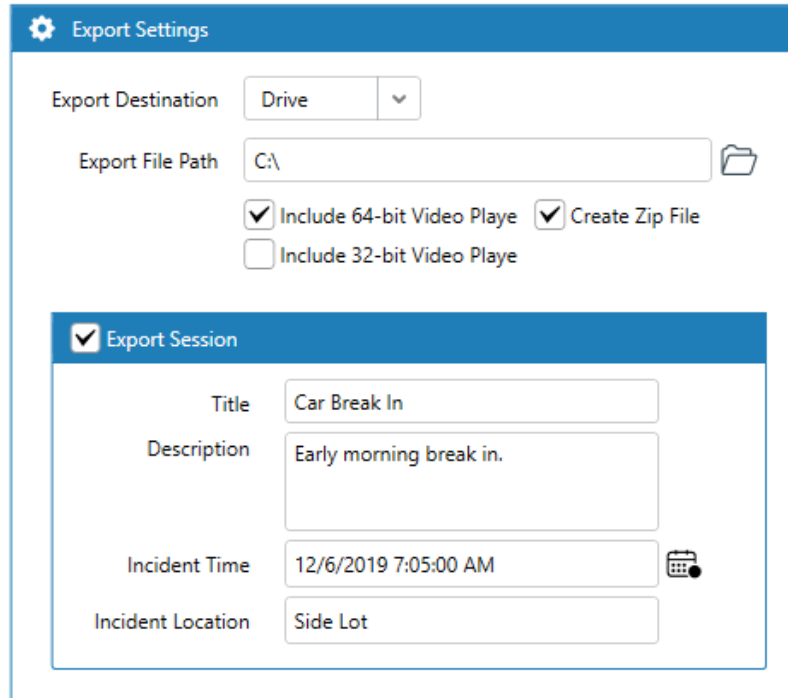
- Intel Pentium 4 CPU, 2.0 Gigahertz (GHz) or faster.
- 1GB of system memory.
- A graphics accelerator with a minimum of 128MB of video memory and capable of displaying 1024x768 resolution in TrueColor (32-bit).

Exporting the Video Player

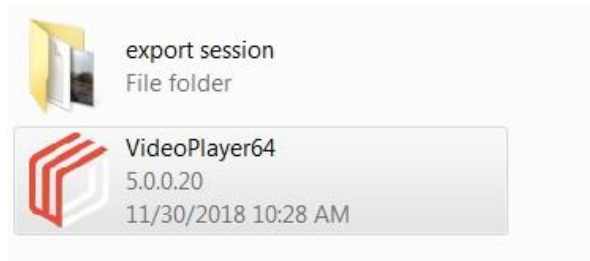
The Video Player is obtained when exporting video from CompleteView 20/20. No installation is necessary on any computer the Video Player is run on.

After selecting a clip to export, choose the export destination and clip length.

After choosing the location and length of the clip to export, select “Include 64-bit Video Player” or “Include 32-bit Video Player,” depending on your system (the 32-bit player will function in either a 32 or 64 bit OS, while the 64 bit player will only work in a 64 bit environment). For large amounts of data, “Create Zip File” may be selected, which will zip all videos into one compressed file. The Video Player only needs to be installed for its first use, and subsequent exported videos can use the same player.



The Video Player will be copied to the same folder that you exported the video clip to.



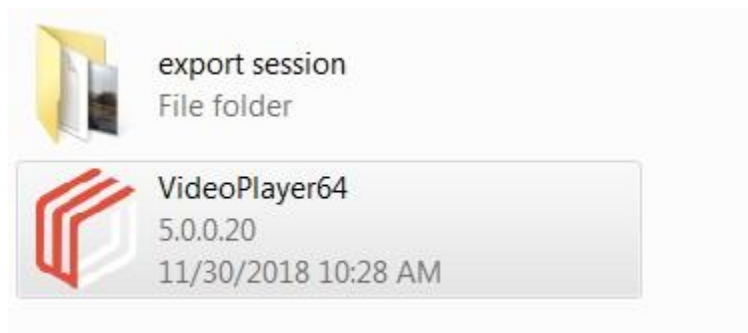
Operating the Video Player

The Video Player can be accessed through either the Windows Desktop or via the command line.

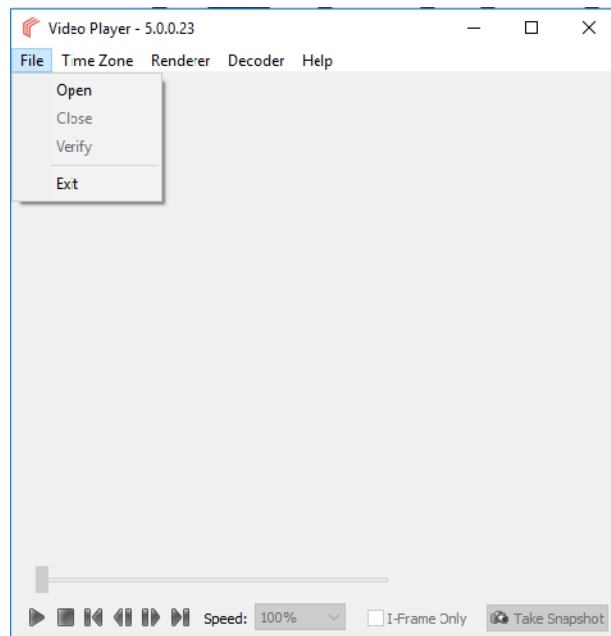
Note: If Video Player is located on a system that does not have CompleteView 20/20 4.6.2 or later installed, it must be run as an administrator if attempting to view an Axis fisheye clip.

Operating the Video Player: Windows Desktop

Locate the VideoPlayerXX.exe file in the folder containing the exported recordings. Launch the Video Player by double-clicking the VideoPlayerXX.exe file.

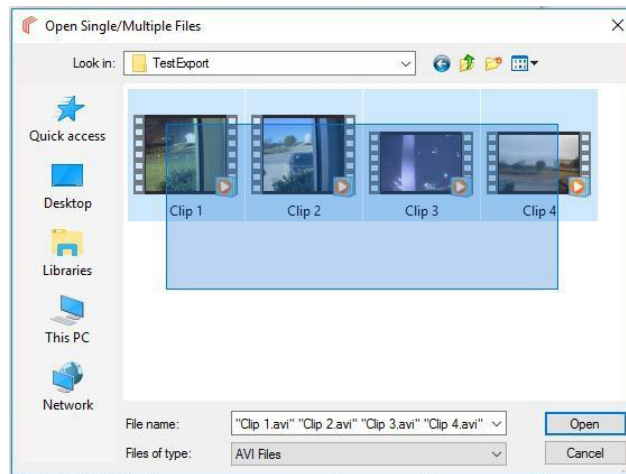


To open a video clip for playback select File -> Open

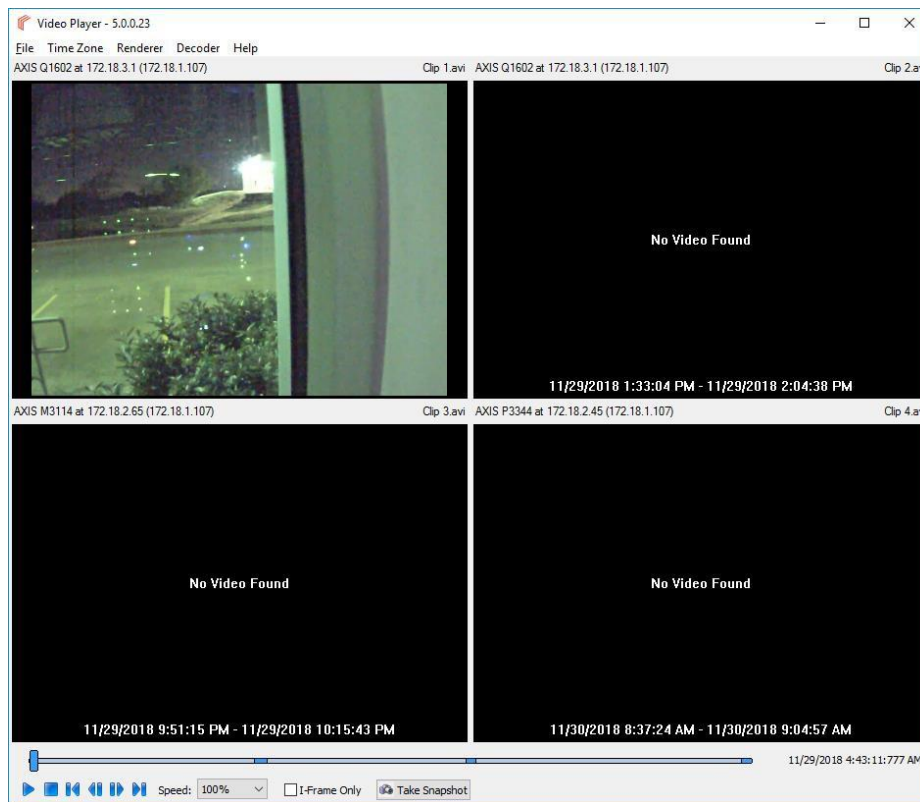


Navigate to the folder containing the video clips. Select between 1 to 16 video clips to playback.

To select multiple video clips, using the Shift or Ctrl keys to select multiple files simultaneously, or draw a box around the files you wish to select, and click Open.



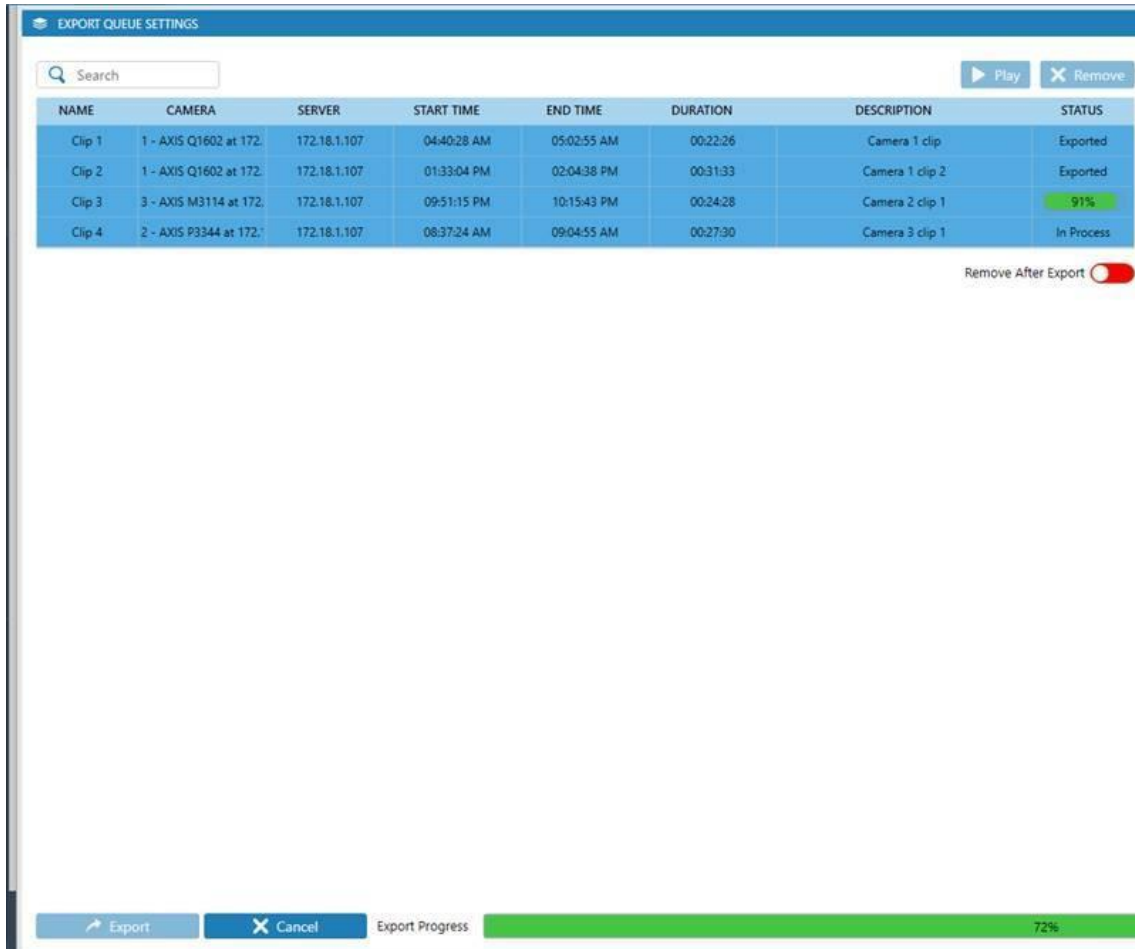
When opening multiple files, the Video Player will play the clips chronologically, simultaneously playing video from overlapping timelines, but stating “No Video Found” when no video is present at the time. Areas of the timeline that are shaded blue indicate that video is available during that time. Areas that are shaded grey indicate that no video is available at that time.



Operating the Video Player: Session Playback

An alternate to multi-file playback is Session Playback. Session Playback incorporates Description, Export Time, Exported By, Location, and Incident Time information in the playback window. Session Playback begins in the CompleteView 20/20 Export Queue.

First, select all the clips for export.



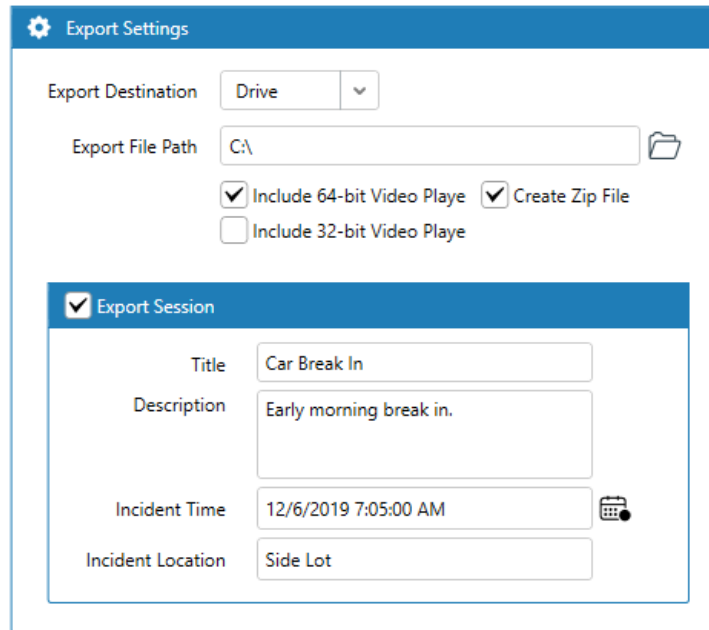
The screenshot displays the 'EXPORT QUEUE SETTINGS' window. At the top, there is a search bar and two buttons: 'Play' and 'Remove'. Below this is a table with the following columns: NAME, CAMERA, SERVER, START TIME, END TIME, DURATION, DESCRIPTION, and STATUS. The table contains four rows of clip data. At the bottom right of the table area, there is a 'Remove After Export' toggle switch which is currently turned on. At the bottom of the window, there is an 'Export' button, a 'Cancel' button, and an 'Export Progress' bar showing 72% completion.

NAME	CAMERA	SERVER	START TIME	END TIME	DURATION	DESCRIPTION	STATUS
Clip 1	1 - AXIS Q1602 at 172.	172.18.1.107	04:40:28 AM	05:02:55 AM	00:22:26	Camera 1 clip	Exported
Clip 2	1 - AXIS Q1602 at 172.	172.18.1.107	01:33:04 PM	02:04:38 PM	00:31:33	Camera 1 clip 2	Exported
Clip 3	3 - AXIS M3114 at 172.	172.18.1.107	09:51:15 PM	10:15:43 PM	00:24:28	Camera 2 clip 1	91%
Clip 4	2 - AXIS P3344 at 172.	172.18.1.107	08:37:24 AM	09:04:55 AM	00:27:30	Camera 3 clip 1	In Process

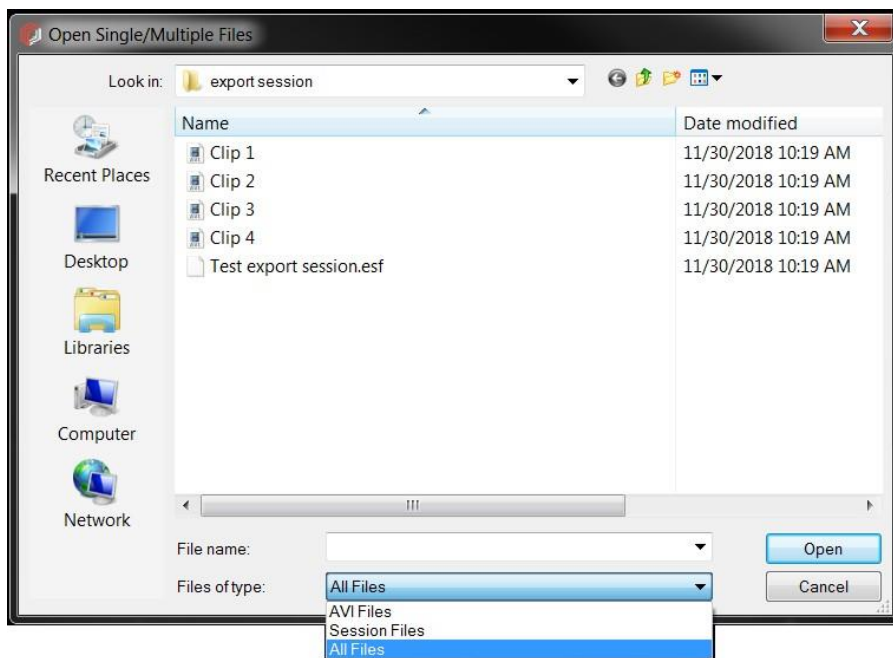
Remove After Export

Export Cancel Export Progress 72%

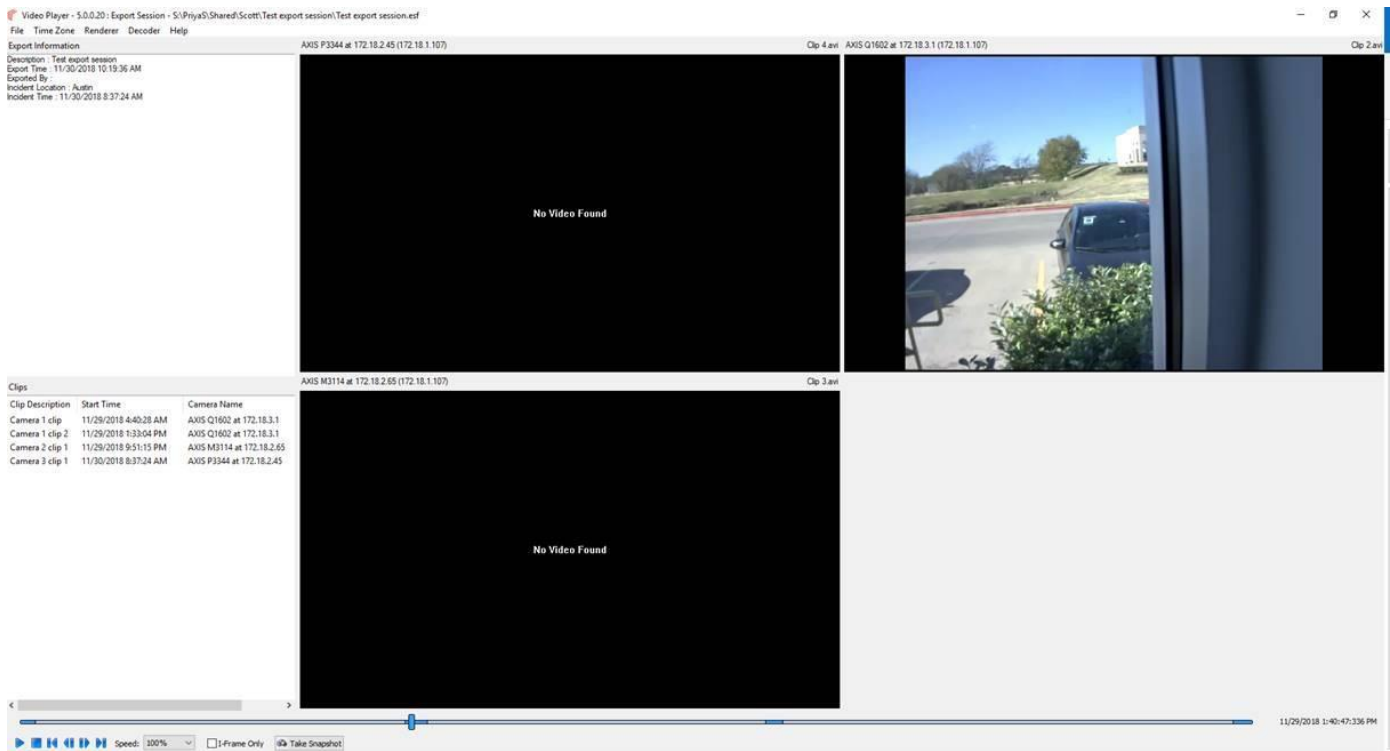
Next, select the Export Session option, and complete the fields. Selecting Export Session creates the required session file (*.esf), which is placed in the same folder as the exported clips. Select Export.



Next, launch the Video Player, select File->Open, then, from the Files of Type dropdown, select All Files. This will reveal the named .esf file.



Select the .esf file, click Open, and the video player will play all exported clips, displaying their relevant information in the left panes.



Note that although there are 4 clips, you see only 3 players. This is because 2 of the clips are from the same camera, so Video Player uses the same tile.

Operating the Video Player: Command Line

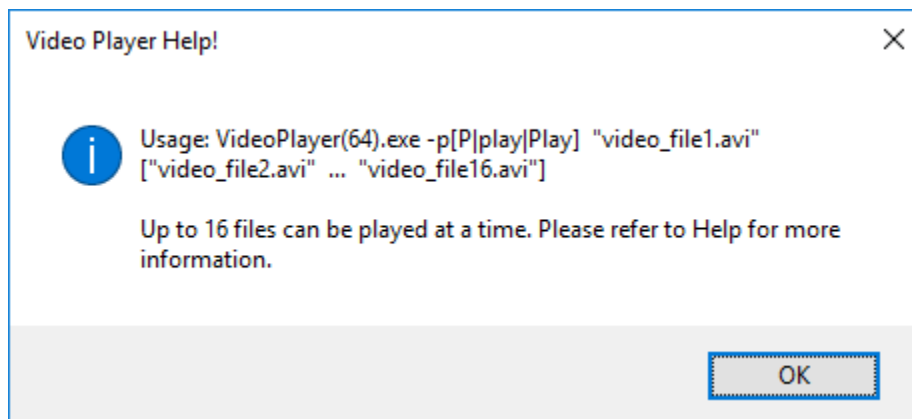
The Video Player is accessible through the Windows command line. From CompleteView 20/20's home directory (C:\Program Files\Salient Security Platform\CompleteView 2020\Desktop Client>), type "VideoPlayer64 -p", followed by the absolute path of the file or files (up to 16) , in quotes, you wish to open.

```
VideoPlayer64.exe -p C:\Videos\Clip1.avi
```

If the Video Player is already running at the time of the command line call, a new instance of the Video Player will appear. In addition, if the .avi files reside in the same directory as the Video Player, the absolute path need not be included. If both valid and invalid files are called by Video Player, the valid files will play normally, and an error message will be displayed for the invalid files.

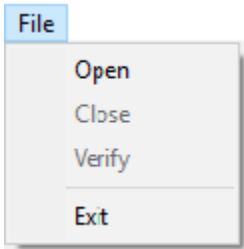
Help can be invoked by typing the usual Windows switches, such as -h, -H, -help, -Help, /?, /h, /H or /Help

For example, typing "VideoPlayer64.exe -h" will produce:



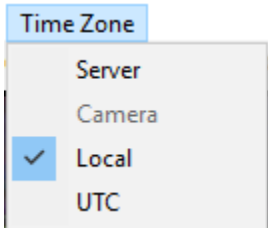
Interface and Controls

File Menu Options



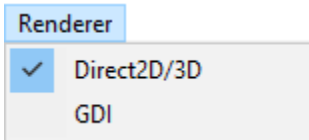
Open	Select this option to open the “Open Single/Multiple Files” dialog box. Select up to 16 .AVI files to playback.
Close	Closes all currently open video clips.
Verify	Checks the digital watermark on all currently open video clips to determine whether tampering has occurred on the video clips.
Exit	Exits the Video Player

Time Zone Menu Options



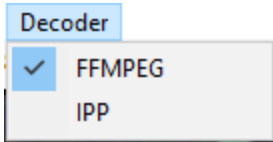
Server	Sets the Time Zone for playback to the CompleteView 20/20 server time.
Camera	Sets the Time Zone for playback to the camera’s time.
Local	Sets the Time Zone for playback to the local time.
UTC	Sets the Time Zone for playback to UTC time.

Renderer Menu Options



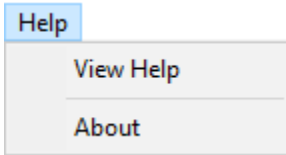
Direct2D/3D	Best for most configurations and the default selection, the Direct2D/3D renderer requires Direct3D to be present and enabled on the workstation. If Direct3D is not present, this option will be grayed out, and GDI will be automatically selected. Contact Salient technical support for more information, if necessary.
GDI	Used for legacy systems where Direct3D is not present or viable.

Decoder Menu Options



FFMPEG	Sets the Video Player to decode exported video using FFMPEG.
IPP	Sets the Video Player to decode exported video using IPP..







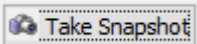

Help Menu Options



View Help	Opens this guide.
About	Displays the software version.

Note: Time zone information is available for clips exported from 4.6 or higher video clients only. In the absence of this information, local time will be used by default”.

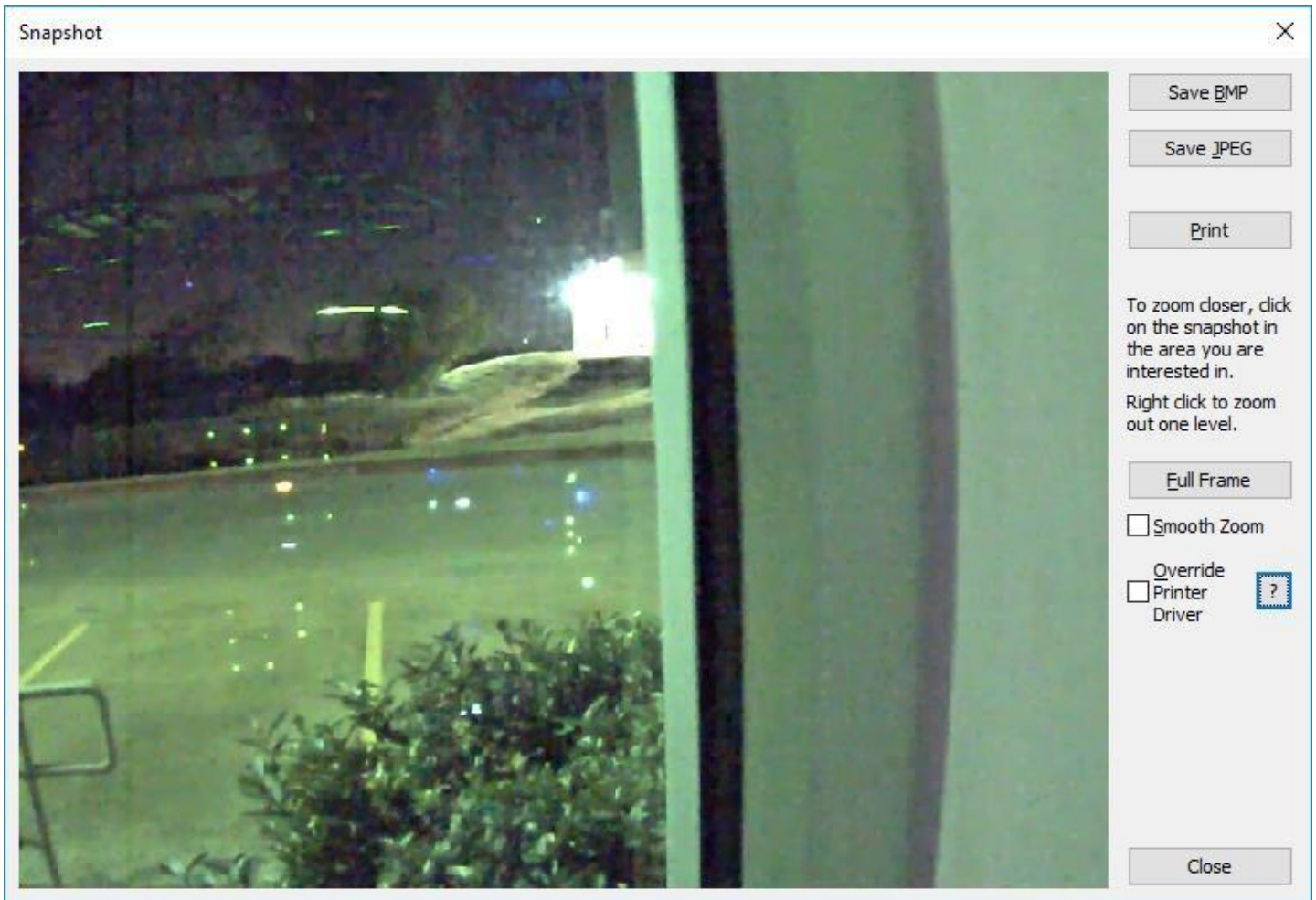
Playback Controls

	Begins playback of the video clips.
	Stops playback of all clips.
	Seek to the beginning of the earliest recorded clip in the currently open group of video clips.
	Step back one frame.
	Step forward one frame.
	Seek to the end of the newest recorded clip in the currently open group of video clips.
Speed: <input type="text" value="100%"/> ▾	Allows selection of playback speed from 50-1600%.
<input checked="" type="checkbox"/> I-Frame Only	Plays back only the I Frames of the selected video(s).
	Launches the Snapshot dialog window.
	Toggle audio on or off. If a clip has recorded audio click this icon to play the recorded audio. One clip with audio can have audio playback at a time.

NOTE: Clips exported using CompleteView 20/20 or newer cannot be played on Video Player 4.6.1 or older.

Snapshot

Snapshot allows the capture of a still image from an exported video as either a .bmp or .jpg file. Snapshot also facilitates printing, with the option of smoothing magnified portions of the image that have been zoomed in on.



Timeline

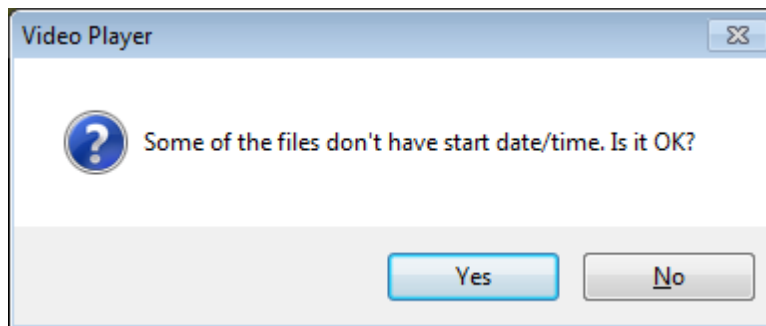
The timeline represents the current position of playback across all the video clips currently opened. The beginning of the timeline will be set as the time of start time of the earliest recorded video clip opened. The end of the timeline will be set as the end of the newest video clip opened.

Areas of the timeline that are shaded blue indicate that video is available during that time. Areas that are shaded grey indicate that no video is available at that time.

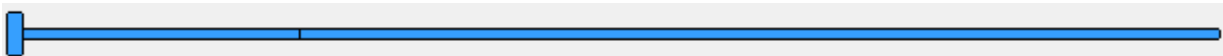


The time and date display to the right of the timeline shows the time and date of the recording

Video clips exported using CompleteView v3.7 and older may not contain information on the date & time the clip was recorded. In the event a video clip does not contain date and time information, the following warning message will display:



The timeline will change to represent the beginning and end of the longest clip being played.



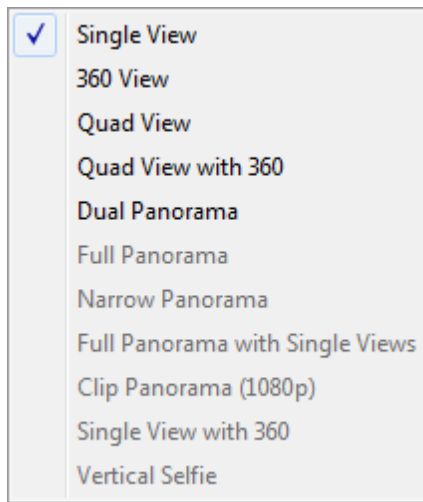
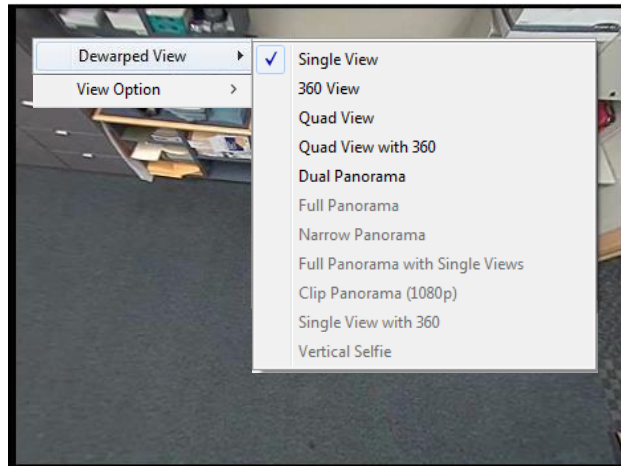
The time display will start at 0 and will count up to the end of the longest clip being played.

0:00:00.00

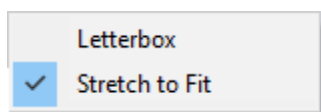
Digital PTZ (Pan, Tilt, and Zoom) is available during recorded video playback. Use the mouse wheel to zoom in and out, and click and drag the area for inspection in the playback screen. If the recorded video was exported from a de-warped fisheye camera, a different set of mouse inputs is utilized: Left click/drag will rotate the image in the direction of the drag, right click/drag left will zoom in digitally, and right click/drag right will zoom out.

Right Click Menu

Video Player is able to dewarp exported clips captured by some models of panoramic cameras. Right clicking in the Video Player will reveal what dewarping options are available for a particular clip. Not all options are available on all clips.



Single View	Displays selected dewarped field of view
360 View	Displays full 360 field of view
Quad View	Displays 4 dewarped fields of view
Quad View w/360	Displays 3 dewarped quadrants, plus full 360 degree view
Dual Panorama	Displays 360 field of view split into halves
Full Panorama	Displays 360 field of view in panorama format
Narrow Panorama	Displays a strip of 360° or 180° field of view, depending on how the camera is mounted.
Full Panorama w/Single Views	Displays 360 field of view in panorama format with selected single views superimposed on screen
Clip Panorama	Currently applies to Vivotek 1080p mode
Single View w/360	Displays a dewarped selected field of view with 360 degree view superimposed on the screen.
Vertical Selfie	Displays a strip of 180° field of view from bottom to top. The display ratio is fixed to 2:1.



Letterbox	Maintains aspect ratio by adding borders around video, if necessary
Stretch to Fit	Expands images to fit within the video tile

Additional Resources

Visit the Salient website, www.salientsys.com, for additional support and CompleteView 20/20 training:

- **Manuals & Documentation** (<https://support.salientsys.com/hc/en-us/categories/115000292747-Knowledge-Base>) – Includes all relevant manuals.
- **Online Tech Support** (<https://support.salientsys.com/hc/en-us>) – Get quick access to online tech support modules that cover the most frequently asked product questions, such as “Adding IP Camera Licenses.”
- **Training** (<https://support.salientsys.com/hc/en-us/categories/115000302988-Training>) – we offer online, classroom, and remote training.
 - CompleteView™ Online Certification - Register online and access the interactive training modules. Certification is valid for one year.
 - CompleteView™ Classroom Certification – Instructor led 2-day course, held in a regional classroom setting, designed to provide you with certification on CompleteView video management software. Certification is valid for two years.
 - CompleteView™ Remote Certification – Instructor directed 2-day course, that the student accesses through their own computer, designed to provide you with certification on CompleteView video management software. Certification is valid for two years.
 - Please visit the Salient website to see the training calendar, agenda, and registration. Contact training@salientsys.com for questions.

Salient Systems

4616 W. Howard Ln.
Building 1, Suite 100
Austin, TX 78728
512.617.4800
512.617.4801 Fax
www.salientsys.com



©2020 Salient Systems Corporation. Company and product names mentioned are registered trademarks of their respective owners.