
SALIENT SYSTEMS COMPLETEVIEW & S2 SECURITY CORPORATION NETBOX SETUP AND INTEGRATION GUIDE



January 2017

S2 Security Corporation
50 Speen St.
Suite 300
Framingham, MA 01701
www.s2sys.com
S2 Support: 508 663-2505

© S2 Security Corporation 2004-2010. All rights reserved.

This guide is protected by copyright and all rights are reserved by S2 Security Corporation. It may not, in whole or in part, except insofar as herein directed, be copied, photocopied, reproduced, translated or reduced to any electronic medium

or machine-readable form without prior written consent of S2 Security Corporation.

Third party trademarks, trade names, product names, and logos may be the trademarks or registered trademarks of their respective owners.

S2 NetBox™, S2 NetBox™ MicroNode, S2 NetBox™ Extreme, S2 Enterprise™, and S2 Enterprise™ Ultra are trademarks of S2 Security Corporation.

Integrated Security for an IP connected world® is a registered trademark of S2 Security Corporation.

Contents

- Salient CompleteView/S2 NetBox Integration Requirements 1**
 - Hardware..... 1
 - Software & Licensing 1
- Setting up the Salient CompleteView / S2 Netbox Integration..... 2**
 - Configuring the Salient CompleteView Recording Server 2
 - Configuring the S2 NetBox 5
 - Verify Live Video from the S2 NetBox interface 8
 - Configure Video Recording Events from the S2 NetBox interface 8
 - Using Live Video, Playback and Pan Tilt & Zoom controls 9

Salient CompleteView/S2 NetBox Integration Requirements

The required components for integrating the Salient CompleteView video management system and S2 NetBox are listed below.

Hardware

- **S2 NetBox:** Version 4.0 or higher is required for the S2 CompleteView OVID integration.
- **PC with Windows XP™ or Windows Server 2003™:** Required for installation of the CompleteView video management system software.

Note: PC hardware requirements for the CompleteView video management server will vary substantially based on the camera recording configuration. Online calculators can be found at <http://www.salientsys.com/> which can be used to determine hardware requirements.

Software & Licensing

- **S2 VMS Licensing:** In new systems, a VMS License File is already enabled. To verify VMS Licensing select **Support/Utility > About** and look for the line “VMS” in the list of licenses.

To order the Video Management System feature for an existing system, select **Support/Utility > About**, create a screen capture of the About page, and email the screen capture to orders@s2sys.com, along with a purchase order for the VMS product you want to add. S2 Security will send you a Product Key and Activation key that are tied to the system license identifier. Once you have received these keys, select **Setup > Site Settings > Software License**, enter the keys into the appropriate boxes, read and accept the terms of the license agreement, and then click **Apply**.

- **CompleteView ONE, Pro or Enterprise v3.5.2 or higher:** This software includes all necessary components and functionality to enable integration to the S2 NetBox v4.0 or higher.
- **Browser:** Internet Explorer 6 or above is required because of the use of an ActiveX component.

Setting up the Salient CompleteView / S2 Netbox Integration

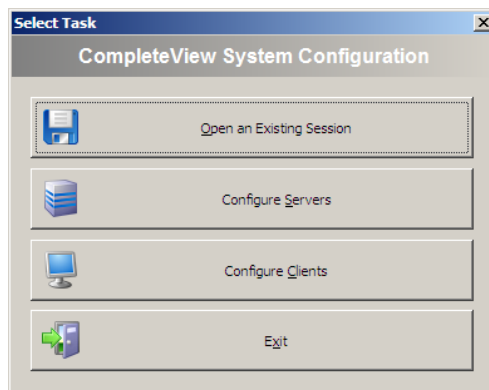
Refer to the Salient *CompleteView Administrators Manual* for instructions on the installation and configuration of CompleteView video management software.

Note: The instructions below are used to integrate an S2 Netbox and Salient CompleteView server which have already been installed and configured. Prior to beginning these step complete the installation and configuration of both devices.

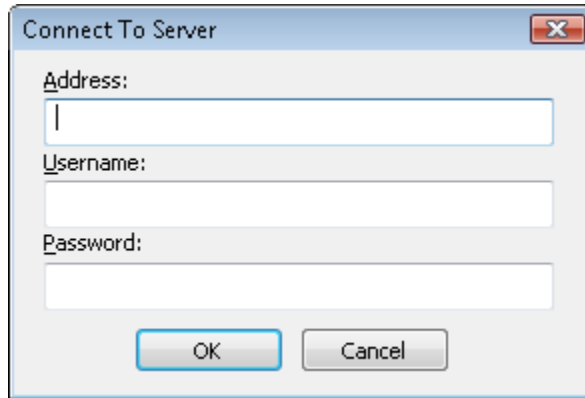
Configuring the Salient CompleteView Recording Server

Important: Verify network communication between the S2 Netbox and the Salient CompleteView server before beginning.

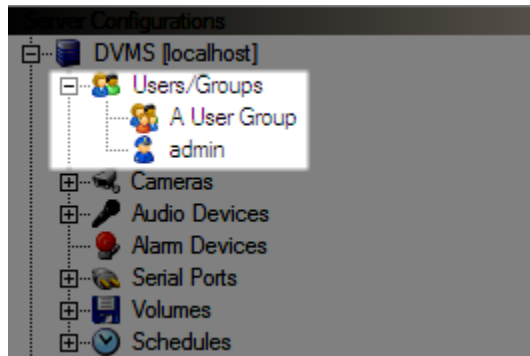
1. Complete the installation and configuration of the Salient CompleteView recording server.
2. Setup an Administrator account with API access.
 - a. From the recording server with CompleteView installed click **Start > Programs > CompleteView > System Configuration**.
 - b. Click **Configure Servers**



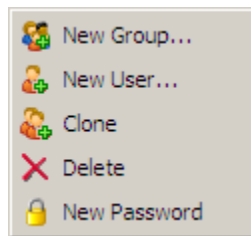
- c. Enter the CompleteView server address and administrator username and password.



- d. Right click on **Users/Groups**



- e. Choose **New User** from the right-click menu



- f. Ensure the user has administrator level access to the recording server by add the user to the Administrators group and/or providing the user individual Administrator level access. Refer to the *CompleteView Administrators Manual* for user configuration instructions.
- g. Click the **Camera** tab on the user's configuration screen. Provide access to cameras that should be accessible from the S2 NetBox.

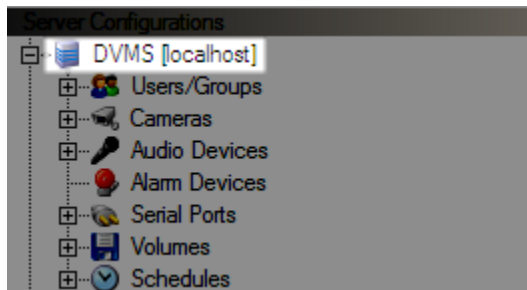
Important: Any user with access to the S2 NetBox and the Salient CompleteView NVR integration will have the same level of camera permissions which are assigned to this user.

- h. Click on **Advanced** tab. Check both checkboxes on the screen to enable API access to the CompleteView server through this user account.

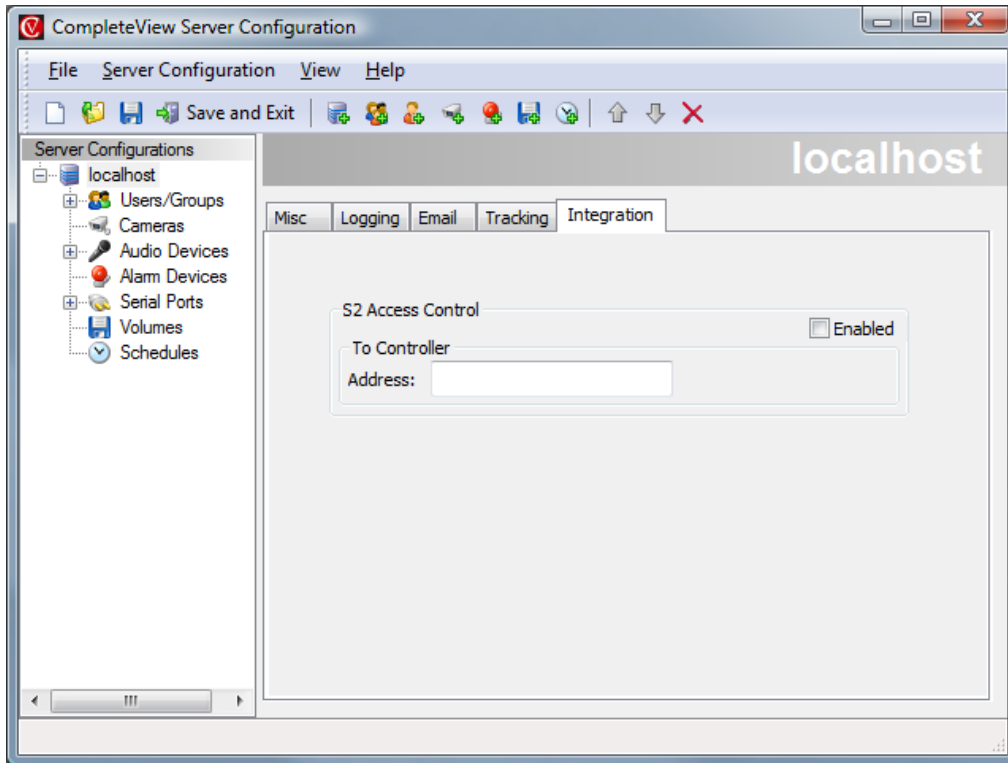


Note: The user account setup here will be used by the S2 NetBox to access and control the Salient CompleteView server.

- 3. Enable the integration
 - a. Within Server Configuration, click on the main **server object** in the tree view.



- b. Click the **Integration** tab.



- c. Check the **Enabled** box.
4. Click **Save and Exit** to save the configuration.

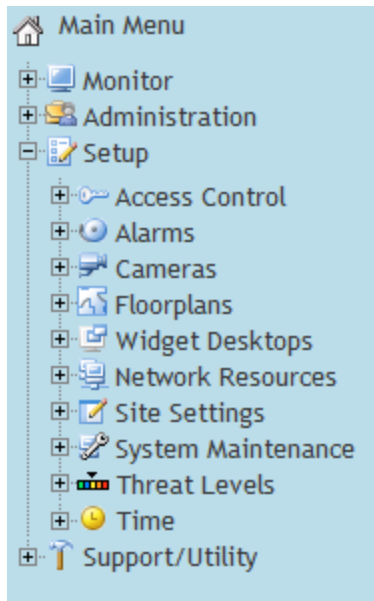
Configuring the S2 NetBox

Once configuration of the Salient CompleteView server is finished, point the S2 NetBox to the CompleteView server in order to get live video and recordings in the NetBox interface.

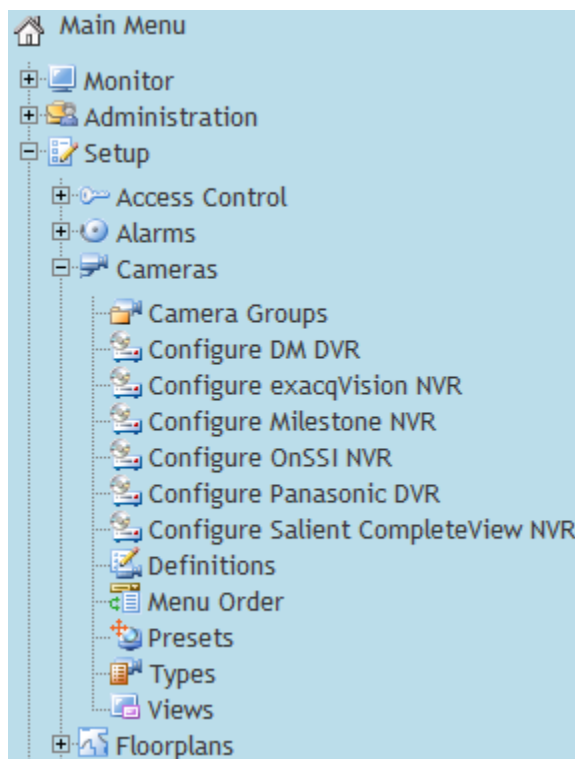
Point the NetBox to the CompleteView Server :

1. Open Internet Explorer and navigate to the NetBox.
2. Login using administrator credentials

3. From the **Main Menu** expand **Setup**



4. Expand **Cameras** and click **Configure Salient CompleteView NVR**



5. Enter the IP address or hostname of the CompleteView server as well as the user name and password of the account with API Access configured on the CompleteView server.

Configure Salient CompleteView NVR

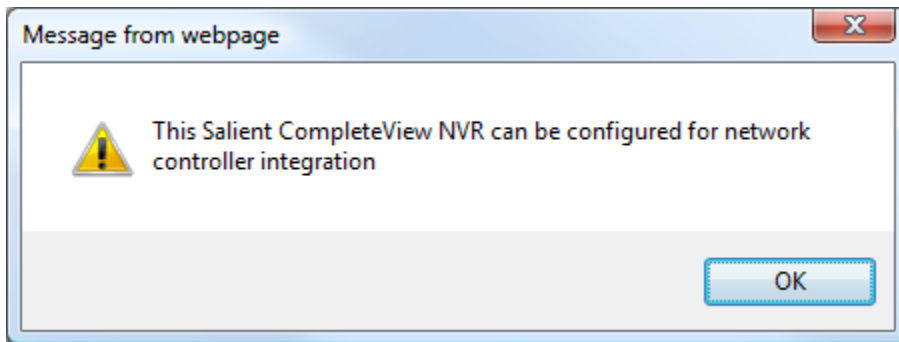
Name: (or [cancel](#))

CompleteView IP Address:

CompleteView Username:

CompleteView Password:(defaults to 'Netbox')

6. Click **Check Connection** to verify the connection from the NetBox to the CompleteView server. The message shown below should appear.



7. The **Discovered Information** section will appear. Click **List NVR Cameras** and verify the cameras setup on the CompleteView server are available.
8. Click **Save**
9. The **Settings** section will appear. If the CompleteView server is on another subnet or behind a firewall you may need to change this information to the “public” IP and port information or the IP and port number accessible from the NetBox.

Settings

Public IP Address:

Public HTTP port:

Combine VMD events arriving within seconds:

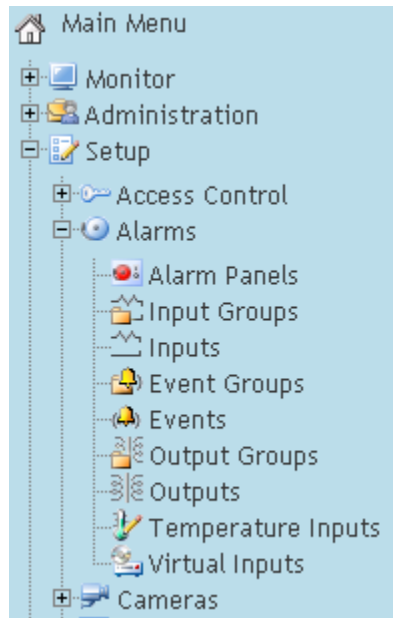
10. You may optionally change **Combine VMD events arriving within seconds**: Video Motion events arriving within the specified number of seconds will be combined into one network controller event.

Verify Live Video from the S2 NetBox interface

1. Select **Monitor** then **Cameras**.
2. Select a camera connected to the CompleteView server.
3. You will be prompted to download the Salient ActiveX control. This is required.
4. Verify that you can see live video from this CompleteView connected camera.

Configure Video Recording Events from the S2 NetBox interface

1. Select **Setup** then **Alarms** then **Events**.



2. Define an event with a **Record Video** action. Be sure to select a CompleteView connected camera.

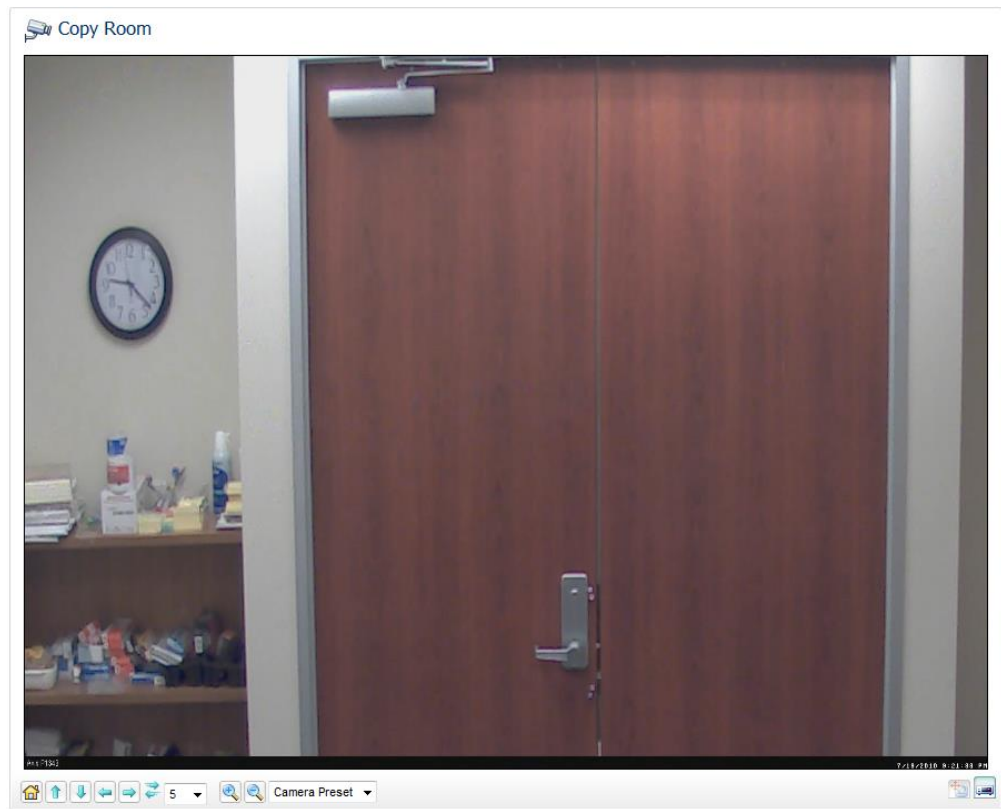
Actions	
current actions: < add new > Log Event	action details: Name:* Record Camera <input checked="" type="checkbox"/> Enabled Action: Record Video Camera: Copy Room Priority: 10 - medium Max Duration (secs): 0 Threat Level Group: < not applicable >
< Apply changes to Action	Delete Action

3. Assign a trigger to this record video event.
 - a. You can select **Setup** then **Alarms** then **Inputs** and assign the event to the **Off-normal Event**.
 - b. Or you can select **Setup** then **Access Control** then **Portals** and assign the event to the *System-wide > Held* state of a portal.







4. Test the event by choosing **Select Monitor** then **Monitoring Desktop** and trigger the event. (Hold the portal open or set the input into an alarm state.)
5. Verify that the event was triggered and click the video icon to view the recorded video.

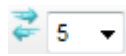
Using Live Video, Playback and Pan Tilt & Zoom controls

When viewing live video controls are presented to move a PTZ capable camera. The controls will appear below the video window as shown below.



PTZ Controls

-  Toggles to live video and Pan Tilt and Zoom controls (if available).
-  Moves the camera to the Home, or preset 1, position.
-  Moves the camera up incrementally.
-  Moves the camera down incrementally.
-  Moves the camera left incrementally.
-  Moves the camera right incrementally.



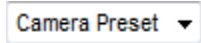
Adjusts the PTZ speed of the camera. Selecting a higher number will increase the speed.



Zoom in.



Zoom out.



Select camera preset position.



Click-In-Image control: Drag pointer around image to pan and tilt. Rotate scroll wheel to zoom in and out.

Playback Controls



Toggle to playback of recorded video.



Go to the beginning of the clip.



Go to the previous frame.



Pause



Resume playback.



Go to the next frame.



Fast forward.



Jump back 15 seconds.